

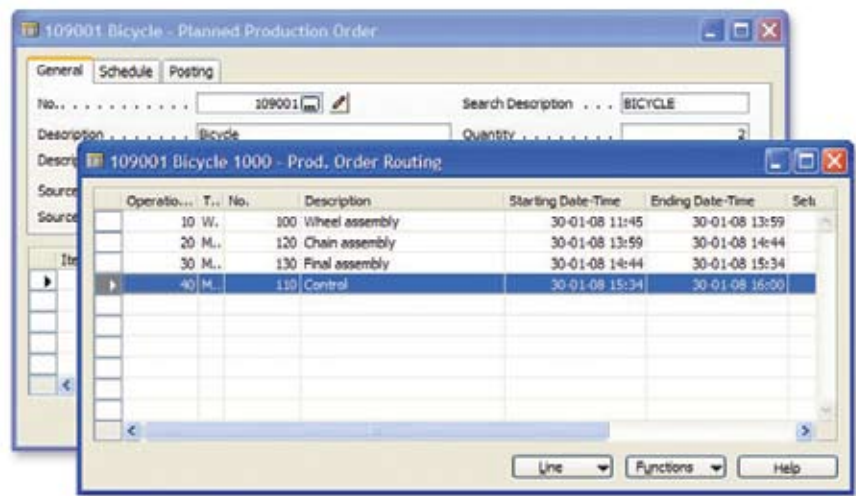
Manufacturing

Manufacturing in Microsoft Dynamics NAV

BENEFITS:

- **Improve business performance from the shop floor to your bottom line.** Streamline your operations by automating manufacturing processes and gain greater visibility into all aspects of your operations from order entry to production, warehouse management, and delivery.
- **Provide customers with information they can count on.** Increase the accuracy of promised orders and respond quickly to customer queries about order status and delivery.
- **Respond quickly to changing customer demands with agile manufacturing.** Plan rush orders, make exceptions, and handle last-minute changes to your manufacturing processes with multiple planning options, tracking, and interactive action messages.
- **Open your business to trading partners around the clock.** Using a Web browser, vendors can manage catalogs, enter drop shipment orders, and maintain delivery dates.

Streamline your manufacturing processes and adapt quickly to changing demands to give customers what they want, when they want it.



Maintain an overview of your production with up-to-date information about and status of individual production orders.

Boost operational efficiency

With Manufacturing in Microsoft Dynamics™ NAV, you can boost operational efficiency and effectively manage production, including production orders, bills of material, supply planning, and capacity requirements planning. Flexible processes and integrated information equip you to make accurate promises to customers, respond quickly to last-minute requests and changes, and take advantage of new business opportunities to help your business stay ahead of the competition.

Any size company can benefit from Microsoft Dynamics NAV manufacturing capabilities. Growing businesses can streamline their manufacturing processes by taking advantage of a simplified manufacturing foundation that includes rapid visibility into work-in-process (WIP), support for order-by-order workflow, and the ability to implement additional functionality as business needs become more complex.

Simplify manufacturing processes

Growing businesses can take advantage of a simplified manufacturing foundation that includes rapid visibility into work-in-process (WIP), support for order-by-order workflow, and the ability to implement additional functionality as business needs become more complex.

FEATURES:

Production management	Improve coordination of made-to-order requests and simplify make-or-buy decisions. Modify components and operations as needed, even on released production orders. Plan product family orders that share the same routing to create efficient build schedules.
Bills of material (BOM)	Tightly integrate different types of BOMs and customized definitions into manufacturing operations to improve performance while supporting time-to-market and time-to-volume objectives. Create, track, and process multiple versions of BOMs and routings.
Graphical scheduling	Access an overview of production schedules displayed in Gantt charts and use drag-and-drop functionality to reschedule operations. Changes are reflected in the relevant production order.
Order promising	Help promise orders more accurately with available-to-promise (ATP) and capable-to-promise (CTP) insight.
Exceptions handling	Action messaging, tracking, and multiple planning options enable you to quickly make exceptions and last-minute changes to meet customer needs.
Supply planning	Plan from the sales order, production order, or purchase requisition, or use traditional master production schedule (MPS) or material requirements planning (MRP) methods. Facilitate materials flow through the supply chain with multi-location planning capabilities. Update and change all materials, costs, and operations simultaneously.
Demand forecasting	Analyze sales patterns from multiple perspectives. Compare forecasted demand with actual sales and consolidate and distribute demand plans with multiple stakeholders to increase collaborative planning.
Manual Planning	An alternative to printed production schedules for smaller businesses, the Manual Planning tool eliminates the complexity of a full MRP system with a simple supply planning tool that enables your production manager to make planning decisions on an order-by-order basis.
Capacity requirements planning	Implement realistic plans according to all incoming resource capacity demands. Redefine order modifiers and reorder policies as needed. Accommodate changing shop floor workloads and simplify planning with calendars and machine center allocation tools.
Machine center allocation	Allocate work and machine centers as capacities to streamline planning. Apply finite loading calculations to capacity-constrained resources to optimize machine centers and increase planning accuracy.
Warehouse and inventory management	Tightly integrate manufacturing and warehousing functionality to help you optimize warehouse layout and space utilization and maintain up-to-date inventory information.
Manufacturing costing	Understand item costs throughout the production process—including inventory, WIP, and cost of goods sold (COGS)—to help efficiently manage sales and purchase prices with customers and vendors.
Automated Data Collection System (ADCS)	Collect and use accurate inventory data in real time and increase the visibility of accurate inventory data throughout your business to improve warehouse efficiency.

For more information about Manufacturing in Microsoft Dynamics NAV, visit www.microsoft.com/dynamics/nav.

This document is for informational purposes only.

MICROSOFT MAKES NO WARRANTIES, EXPRESS, IMPLIED, OR STATUTORY, AS TO THE INFORMATION IN THIS DOCUMENT.

Microsoft